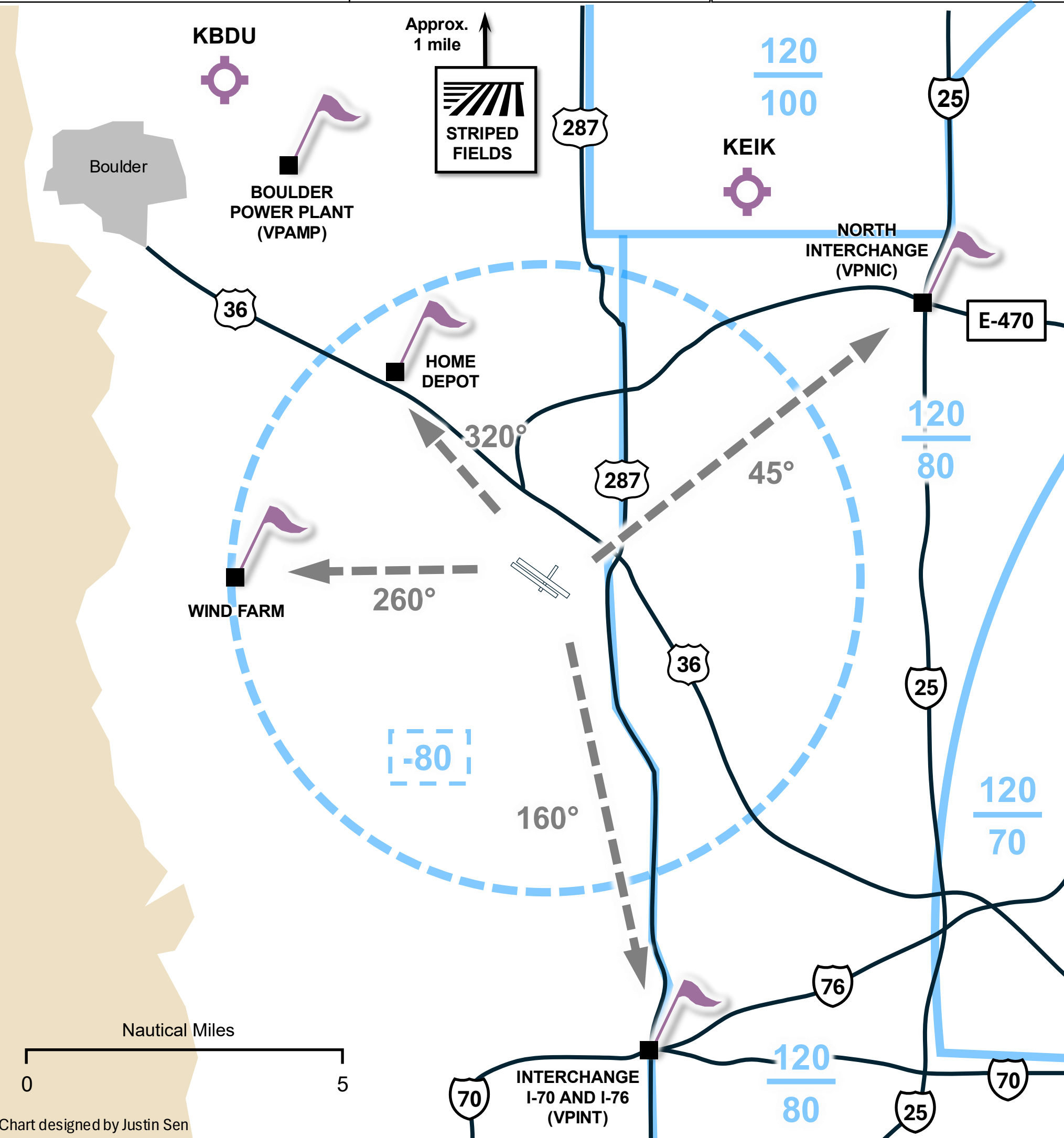


ATIS 126.25	TOWER 118.60 / 123.95	GROUND 121.70
----------------	--------------------------	------------------



NOTE: This is **NOT** an official FAA chart and was made for Rocky Mountain Flight School. Questions? Contact Matt Beyer

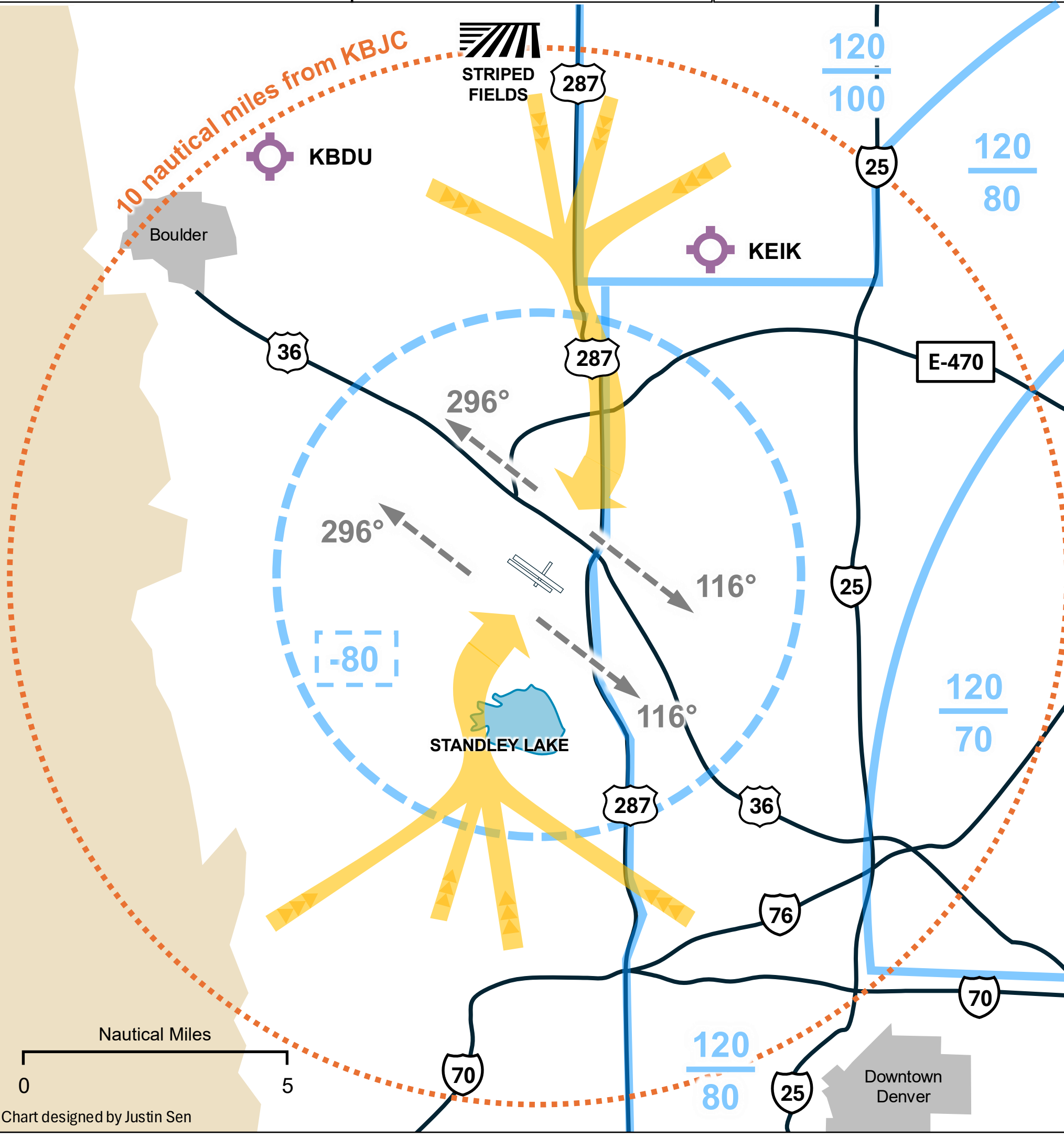
**ROUTE DESCRIPTION**

**NOTE:** Pilots should make their initial call to METRO GROUND with one of the four named departure routes listed below depending on direction of flight and runway being used:

**VFR NORTH DEPARTURE**  
**30R/L "HOME DEPOT DEPARTURE":** Pilots are expected to fly to the HOME DEPOT, then on course  
**12L/R "NORTH INTERCHANGE DEPARTURE":** Pilots are expected to fly to the NORTH INTERCHANGE (VPINC), then on course

**VFR SOUTH DEPARTURE**  
**30R/L "WINDFARM DEPARTURE":** Pilots are expected to fly to the WINDFARM, then on course  
**12L/R "VPINT DEPARTURE":** Pilots are expected to fly to VPINT, then on course

ATIS 126.25	TOWER 118.60 / 123.95	GROUND 121.70
----------------	--------------------------	------------------



NOTE: This is **NOT** an official FAA chart and was made for Rocky Mountain Flight School. Questions? Contact Matt Beyer

**ROUTE DESCRIPTION**

**VFR ARRIVAL FROM THE NORTH ("287 ARRIVAL")**  
 Make initial call to the TOWER when approximately 10 nautical miles away  
 Expect to "Fly SOUTH along ROUTE 287 to enter MID-FIELD DOWNWIND"

**VFR ARRIVAL FROM THE SOUTH ("STANDLEY LAKE ARRIVAL")**  
 Make initial call to the TOWER when approximately 10 nautical miles away  
 Expect to "Fly to the WEST side of STANDLEY LAKE to enter MID-FIELD DOWNWIND"

**Then...**  
 Expect "TOWER will call your BASE" once in the DOWNWIND leg  
**DOWNWIND RW 12L/R:** maintain heading ~296° until told to turn BASE  
**DOWNWIND RW 30R/L:** maintain heading ~116° until told to turn BASE